



Abridge Road, Chigwell, IG7

BUTLER & STAG





**An impressive ground floor luxury apartment in a prestigious modern development adjacent to Woolston Manor Golf Course.**

**Finished to very exacting standards the apartment provides a double bedroom, contemporary luxury bathroom, bright open-plan living room and kitchen, bi-fold doors leading on to a private terrace. The open-plan fitted kitchen boasts integrated appliances including dishwasher.**



- Ground Floor Flat
- One Bedroom
- Adjacent to Golf Course & Gym
- Allocated Parking
- Outside Space
- Secure Modern Development
- Contemporary Fittings



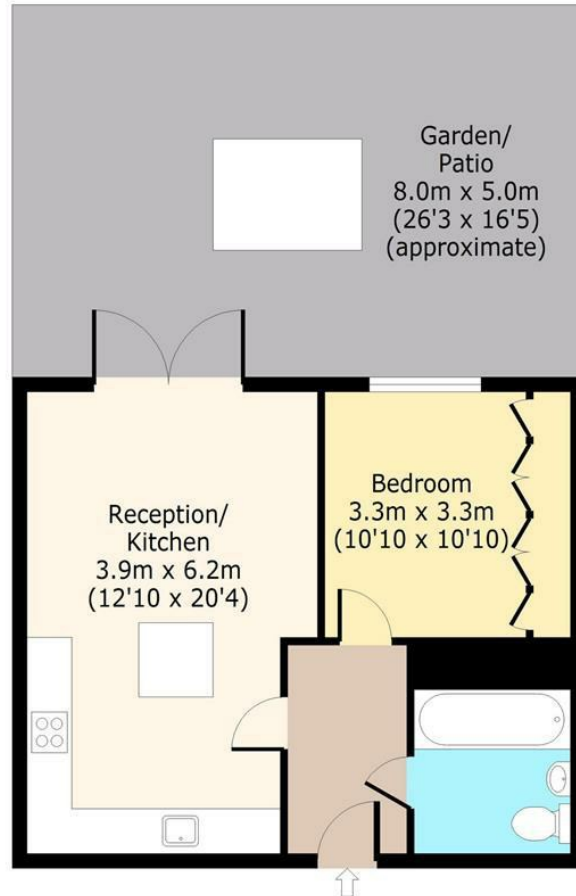






## Woolston Manor Apartments, IG7 6BX

**Ground Floor**  
Approx. 45 Sq. meters (484 Sq. feet)



Total area: approx. 45 Sq. meters (484 Sq. feet)  
For illustration purposes only - not to scale  
[www.londonpropertyassessments.co.uk](http://www.londonpropertyassessments.co.uk)

IMPORTANT NOTICE - These particulars have been prepared in good faith and they are not intended to constitute part of an offer or contract. We have not performed a structural survey on this property and the services, appliances and specific fittings have not been tested. All photographs, measurements, floor plans and distances referred to are given as a guide and should not be relied upon.

# BUTLER & STAG

☎ 01992 667666

🏠 4 Forest Drive, Theydon Bois, Essex, CM16 7EY

✉ [theydon@butlerandstag.com](mailto:theydon@butlerandstag.com)

[www.butlerandstag.uk](http://www.butlerandstag.uk)